

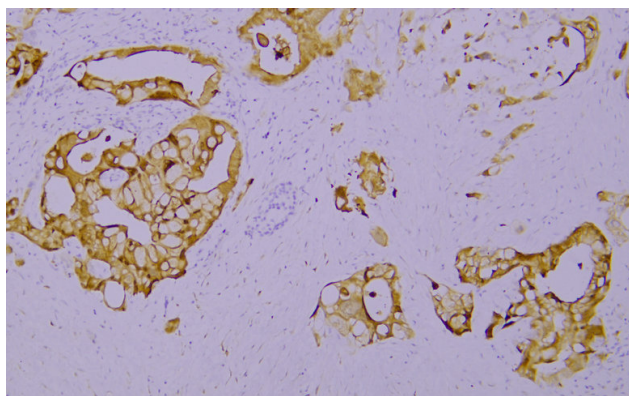


# S100A6 rabbit mAb(ABT179R)

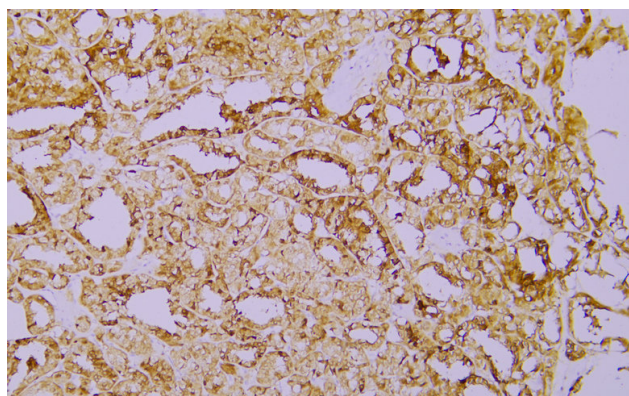
<b>Catalog No</b>	YP-Ab-15505
<b>Isotype</b>	IgG
<b>Reactivity</b>	Human
<b>Applications</b>	IHC;IF
<b>Gene Name</b>	S100A6 CACY
<b>Protein Name</b>	S100A6
<b>Immunogen</b>	Synthesized peptide derived from human S100A6
<b>Specificity</b>	This antibody detects endogenous levels of S100A6 at Human
<b>Formulation</b>	Liquid in PBS containing 50% glycerol, 0.5% BSA and 0.02% sodium azide.
<b>Source</b>	Polyclonal, Rabbit,IgG
<b>Purification</b>	The antibody was affinity-purified from Cell supernatant by affinity-chromatography using specific immunogen.
<b>Dilution</b>	IHC-p 1:2000. IF 1:50-200
<b>Concentration</b>	1 mg/ml
<b>Purity</b>	≥90%
<b>Storage Stability</b>	-20°C/1 year
<b>Synonyms</b>	Protein S100-A6 (Calcyclin;Growth factor-inducible protein 2A9;MLN 4;Prolactin receptor-associated protein;PRA;S100 calcium-binding protein A6)
<b>Observed Band</b>	
<b>Cell Pathway</b>	Nucleus envelope. Cytoplasm. Cell membrane; Peripheral membrane protein; Cytoplasmic side.
<b>Tissue Specificity</b>	Brain,Fibroblast,Placenta,Platelet,
<b>Function</b>	induction:Preferentially expressed when quiescent fibroblasts are stimulated to proliferate. It is inducible by growth factors and overexpressed in acute myeloid leukemias.,miscellaneous:This protein co-purified with the prolactin receptor.,PTM:The N-terminus is blocked.,similarity:Belongs to the S-100 family.,similarity:Contains 2 EF-hand domains.,subunit:Homodimer, antiparallel. Interacts with SUGT1.,
<b>Background</b>	
<b>matters needing attention</b>	Avoid repeated freezing and thawing!

**Usage suggestions**

This product can be used in immunological reaction related experiments. For more information, please consult technical personnel.

**Products Images**

Immunohistochemical analysis of paraffin-embedded human Pancreatic carcinoma. 1, Antibody was incubated at 4° overnight. 2, TRIS-EDTA of pH8.0 was used for antigen retrieval. 3, Secondary antibody was diluted at 1:200(room temperature, 30min).



Immunohistochemical analysis of paraffin-embedded human Papillary thyroid carcinoma. 1, Antibody was incubated at 4° overnight. 2, TRIS-EDTA of pH8.0 was used for antigen retrieval. 3, Secondary antibody was diluted at 1:200(room temperature, 30min).